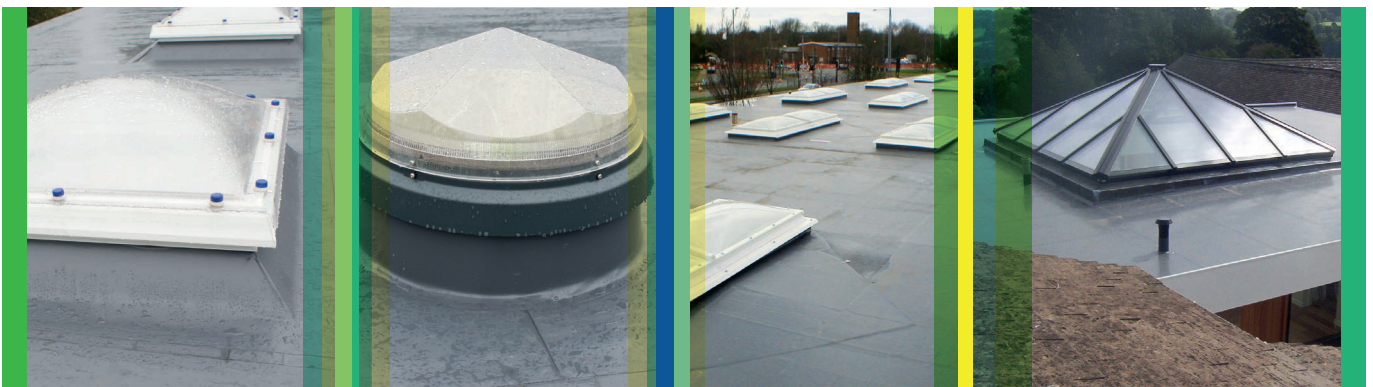


# Evalite Rooflights



---

# EVALITE TECHNICAL DATA

---

1. **Evalite Access & Emergency Escape Hatch Fixing details**
2. **Evalite Barrel Vaults**
3. **Evalite Canopies**
4. **Evalite Domes & Pyramids**
5. **Evalite Mono Pitch**
6. **Evalite Monovision Rooflights**
7. **Evalite Smoke Ventilation**
8. **Evalite Special Glazing**

All Rooflights have been tested at BRE and are manufactured to: BS EN 6375-1:2009 Weather Tightness; BS EN 1026 / 12207:2000 Air Permeability; BS EN 1873 / 12208:2000 Water Tightness; BS EN 12210:2000 Wind Resistance; BS EN 1991-1 Snow Load; BS EN ISO 140 Acoustic; BS EN 1627-1630 Security.

ICB (Waterproofing) Ltd.  
Unit 9 -11, Fleets Industrial Estate, Willis Way, Poole, Dorset, BH15 3SU UK  
Tel: 01202 785200 Fax: 01202 785201 Email: [info@icb.uk.com](mailto:info@icb.uk.com)

[www.icb.uk.com](http://www.icb.uk.com)

# EVALITE ACCESS & EMERGENCY ESCAPE HATCH

## TECHNICAL DATA

### Including emergency escape hatch with overriding manual locking facility externally.

Access Hatches are manufactured with an insulated aluminium upstand. The Access Hatches are manufactured within our factory, therefore can be supplied in various sizes and designs. They can also be motorised and have various security options.

	Evalite Access Hatch	Evalite Motorised Access Hatch
<b>Type</b>	Hatches suitable for all types of flat/pitched roofs.	
<b>Frame</b>	Aluminium, aluminium to BS 1474:1987 Alloy 6063-T6.	
<b>Upstand Finish</b>	Dark grey – XTEVA coated – Aluminium.	
<b>Colour</b>	Polyester powder coated to BS 6496 Interpon D36 range. RAL 9010 white matt or any standard RAL colour.	
<b>Kerb</b>	<b>FR1</b> ICB proprietary Xteva coated aluminium upstand 350mm high. This kerb is painted white internally. The upstand is insulated externally with GRP or aluminium to suit your Roofers requirements. Depth of upstand can be changed to suit your particular requirements.	<b>FR1</b> ICB proprietary Xteva coated aluminium upstand 400mm high. This kerb is painted white internally. The upstand is insulated externally with aluminium with hidden motors.
	<b>BU1</b> ICB proprietary Xteva coated aluminium upstand 150mm high. This kerb is painted white internally. The upstand is insulated externally with insulation encapsulated in aluminium. The flange width can be modified to meet your needs.	<b>BU1</b> ICB proprietary Xteva coated aluminium upstand 150mm high. This kerb is painted white internally. The upstand is insulated externally with insulation encapsulated in aluminium. The flange width can be modified to meet your needs.
<b>Lid</b>	<b>Type A</b> Insulated aluminium lid.	
	<b>Type B</b> Clear or opal non fragile UV protected polycarbonate dome.	
	<b>Type C</b> Glass, double-glazed units.	
<b>'U' Value</b>	Double skin 2.7 W/m <sup>2</sup> K Triple skin 1.5 W/m <sup>2</sup> K	
<b>Fragility</b>	They have been tested and are classed as NON-FRAGILE Class B to ACR(M)001:2005. Test for Fragility of Roofing Assemblies.	
<b>Fire Rating</b>	BS 476 Part 3. Fire Rating AA. Spread of flames to BS 476 Part 7: Class 1. Class O Material to Building Regulations 1985, Tp (a) Rigid Classification as described in Approved Document B of Building Regulations.	
<b>Roof Opening</b>	To suit your requirements.	
<b>Operation</b>	Gas springs.	2 no. 24 Volt linear actuators.
<b>Option</b>	Keyed lock to inside standard. Other options available upon request.	Small control panel with reversing switch including 240v/24v transformer.
<b>Sizes</b>	Sizes start from 600mm x 600mm. Any size or configuration.	
<b>Fixing</b>	In accordance with ICB fixing recommendations.	

All Rooflights have been tested at BRE and are manufactured to: BS EN 6375-1:2009 Weather Tightness; BS EN 1026 / 12207:2000 Air Permeability; BS EN 1873 / 12208:2000 Water Tightness; BS EN 12210:2000 Wind Resistance; BS EN 1991-1 Snow Load; BS EN ISO 140 Acoustic; BS EN 1627-1630 Security.

ICB (Waterproofing) Ltd.  
Unit 9 -11, Fleets Industrial Estate, Willis Way, Poole, Dorset, BH15 3SU UK  
Tel: 01202 785200 Fax: 01202 785201 Email: info@icb.uk.com

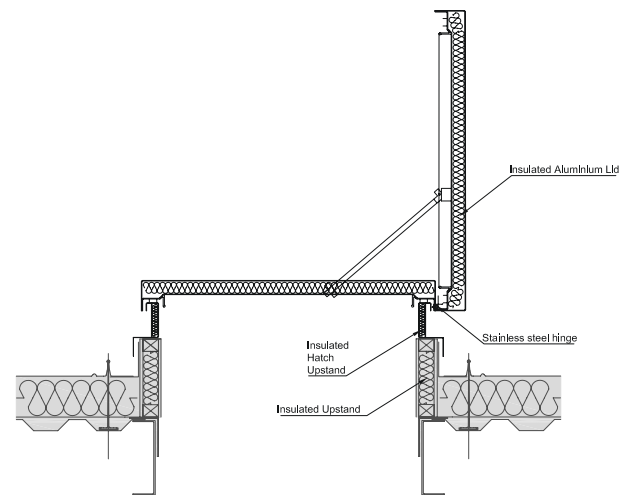
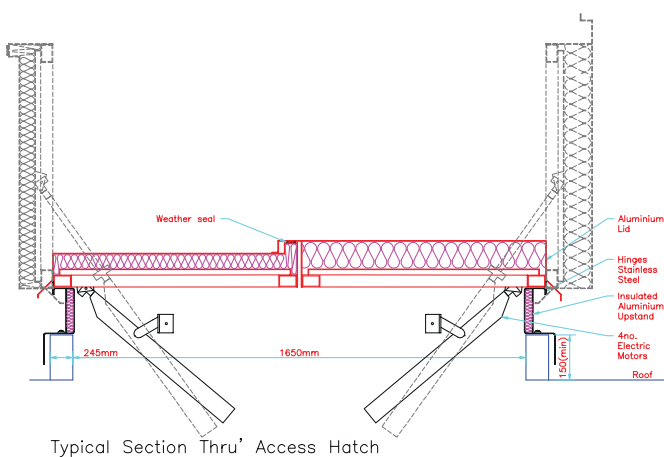
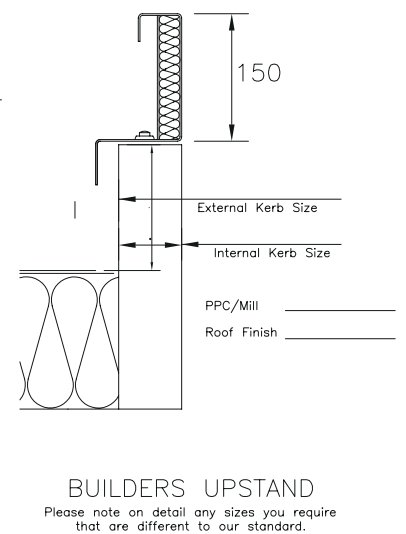
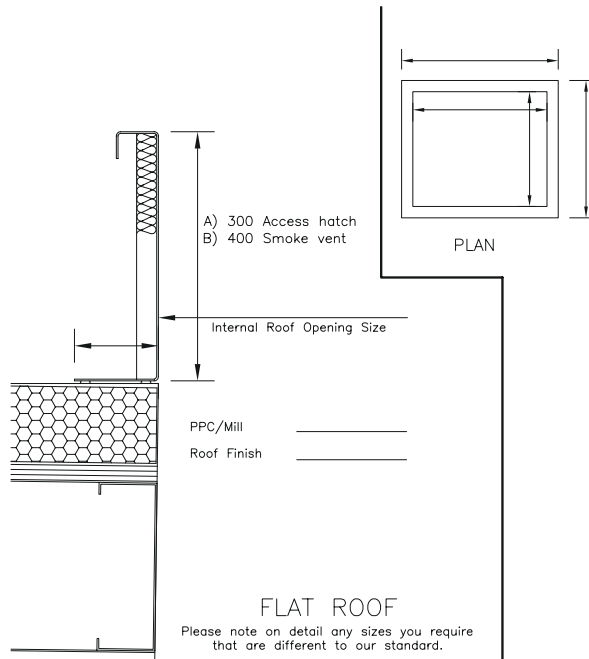
[www.icb.uk.com](http://www.icb.uk.com)

# EVALITE ACCESS & EMERGENCY ESCAPE HATCH FIXING DETAILS

The following diagrams show typical Access Hatch fixing details.

Other details upon request.

Internal sizes along with kerbs and upstands can be made to suit individual requirements.



All Rooflights have been tested at BRE and are manufactured to: BS EN 6375-1:2009 Weather Tightness; BS EN 1026 / 12207:2000 Air Permeability; BS EN 1873 / 12208:2000 Water Tightness; BS EN 12210:2000 Wind Resistance; BS EN 1991-1 Snow Load; BS EN ISO 140 Acoustic; BS EN 1627-1630 Security.

ICB (Waterproofing) Ltd.  
Unit 9-11, Fleets Industrial Estate, Willis Way, Poole, Dorset, BH15 3SU UK  
Tel: 01202 785200 Fax: 01202 785201 Email: info@icb.uk.com

[www.icb.uk.com](http://www.icb.uk.com)

# EVALITE BARREL VAULTS

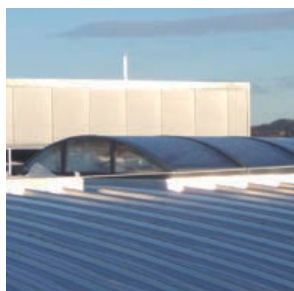
## TECHNICAL DATA

**The Barrel Vault is a curved rooflight. The height of which is 1/5th the span of the rooflight. They are generally supplied in double or triple glazed polycarbonate.**

However, if no thermal performance is required i.e. in a walkway, then single glazed polycarbonate can be supplied.

	<b>Evalite Barrel Vault</b>
<b>Type</b>	Barrel vault rooflight low rise (rise in centre 1/5th of kerb width).
<b>Frame</b>	Aluminium, aluminium to BS 1474:1987 Alloy 6063-T6.
<b>Upstand Finish</b>	Dark grey – XTEVA coated – Aluminium.
<b>Colour</b>	RAL 9010 white matt or any standard RAL colour.
<b>Kerb</b>	Structural kerb by others to take imposed loads. Minimum 100mm wide x 150mm high above finished roof level.
<b>Glazing</b>	3mm UV coated polycarbonate inner skin, 3mm or 4mm UV coated polycarbonate outer. The glazing is Makrolon Mono Longlife UV resistant polycarbonate sheet. 10 year warranty on breakage, excessive yellowing and loss of light transmission. Fire rating: Makrolon 2099 when tested to BS 476 Part 3 is rated AA surface spread of flame to BS 476 Part 7 Class 1. Class O material to Building Regulation 1985. TP(a) rigid classification as described in approved Document B of Building Regulation 1991.
<b>Fragility</b>	<b>They have been tested and are classed as NON FRAGILE Class B. To ACR(M)001:2005 Test for Fragility of Roofing Assemblies.</b>
<b>'U' Value</b>	Double skin 2.7 W/m <sup>2</sup> K. Triple skin 1.7 W/m <sup>2</sup> K. Multisheet <1.6 W/m <sup>2</sup> K.
<b>Colour</b>	Clear – light transmission 90% Opal – light transmission 60%.
<b>Sizes</b>	To suit your kerb size.
<b>Fixing</b>	In accordance with ICB fixing recommendations.

**Other details and options upon request.**



All Rooflights have been tested at BRE and are manufactured to: BS EN 6375-1:2009 Weather Tightness; BS EN 1026 / 12207:2000 Air Permeability; BS EN 1873 / 12208:2000 Water Tightness; BS EN 12210:2000 Wind Resistance; BS EN 1991-1 Snow Load; BS EN ISO 140 Acoustic; BS EN 1627-1630 Security.

ICB (Waterproofing) Ltd.  
Unit 9 -11, Fleets Industrial Estate, Willis Way, Poole, Dorset, BH15 3SU UK  
Tel: 01202 785200 Fax: 01202 785201 Email: [info@icb.uk.com](mailto:info@icb.uk.com)

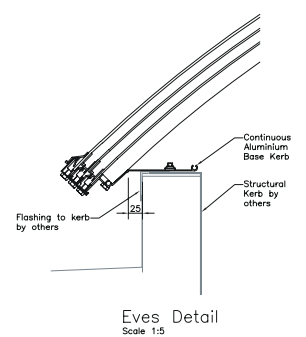
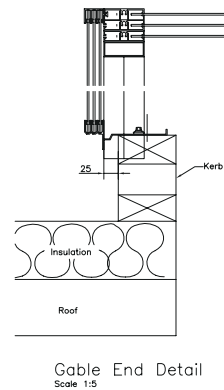
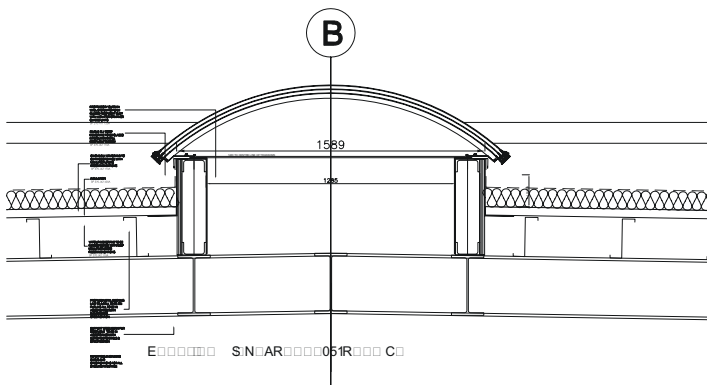
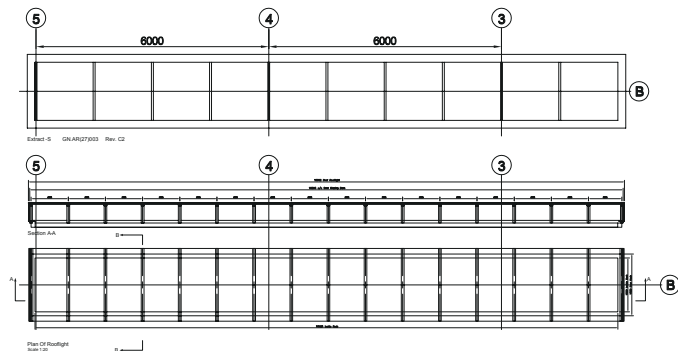
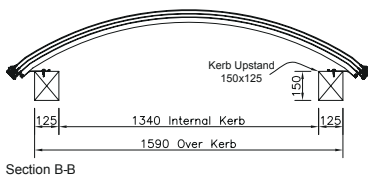
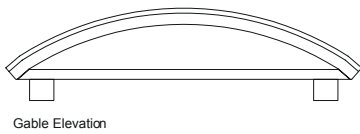
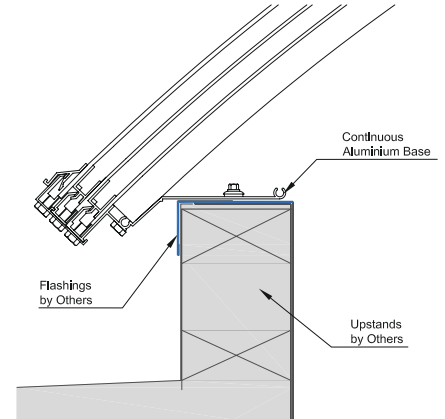
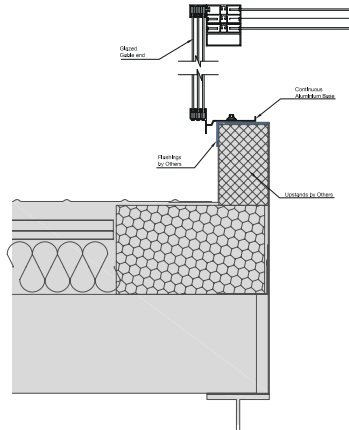
[www.icb.uk.com](http://www.icb.uk.com)

# EVALITE BARREL VAULTS

## FIXING DETAILS

The following diagrams show typical Barrel Vault fixing details.

Other details upon request.



All Rooflights have been tested at BRE and are manufactured to: BS EN 6375-1:2009 Weather Tightness; BS EN 1026 / 12207:2000 Air Permeability; BS EN 1873 / 12208:2000 Water Tightness; BS EN 12210:2000 Wind Resistance; BS EN 1991-1 Snow Load; BS EN ISO 140 Acoustic; BS EN 1627-1630 Security.

ICB (Waterproofing) Ltd.  
Unit 9-11, Fleets Industrial Estate, Willis Way, Poole, Dorset, BH15 3SU UK  
Tel: 01202 785200 Fax: 01202 785201 Email: info@icb.uk.com

[www.icb.uk.com](http://www.icb.uk.com)



---

# EVALITE CANOPIES

---

Canopies can be glazed in polycarbonate or glass and manufactured in various designs to suit individual requirements.



All Rooflights have been tested at BRE and are manufactured to: BS EN 6375-1:2009 Weather Tightness; BS EN 1026 / 12207:2000 Air Permeability; BS EN 1873 / 12208:2000 Water Tightness; BS EN 12210:2000 Wind Resistance; BS EN 1991-1 Snow Load; BS EN ISO 140 Acoustic; BS EN 1627-1630 Security.

ICB (Waterproofing) Ltd.  
Unit 9-11, Fleets Industrial Estate, Willis Way, Poole, Dorset, BH15 3SU UK  
Tel: 01202 785200 Fax: 01202 785201 Email: info@icb.uk.com

[www.icb.uk.com](http://www.icb.uk.com)

# EVALITE DOMES & PYRAMIDS

## TECHNICAL DATA

There are many varied ways of linking domes and pyramids together.

Please consult our technical department for more information.

Evalite Rooflight					
<b>Type</b>	Rooflights suitable for all types of flat/pitched roofs.				
<b>Frame</b>	Aluminium, aluminium to BS 1474:1987 Alloy 6063-T6.				
<b>Upstand Finish</b>	Dark grey – XTEVA coated – Aluminium				
<b>Kerb</b>	<table border="1"> <thead> <tr> <th>Type 1</th> <th>Type 2</th> </tr> </thead> <tbody> <tr> <td>ICB proprietary aluminium upstand 300mm high. This kerb is painted white internally. The upstand is insulated externally with GRP. Depth of upstand can be changed to suit your particular requirements.</td> <td>ICB proprietary aluminium upstand 150mm high. This kerb is painted white internally. The upstand is insulated externally with insulation encapsulated in aluminium.</td> </tr> </tbody> </table>	Type 1	Type 2	ICB proprietary aluminium upstand 300mm high. This kerb is painted white internally. The upstand is insulated externally with GRP. Depth of upstand can be changed to suit your particular requirements.	ICB proprietary aluminium upstand 150mm high. This kerb is painted white internally. The upstand is insulated externally with insulation encapsulated in aluminium.
Type 1	Type 2				
ICB proprietary aluminium upstand 300mm high. This kerb is painted white internally. The upstand is insulated externally with GRP. Depth of upstand can be changed to suit your particular requirements.	ICB proprietary aluminium upstand 150mm high. This kerb is painted white internally. The upstand is insulated externally with insulation encapsulated in aluminium.				
<b>Glazing</b>	<p>3mm UV coated polycarbonate inner skin, 3mm or 4mm UV coated polycarbonate outer.</p> <p>The glazing is Makrolon Mono Longlife UV resistant polycarbonate sheet. 10 Year warranty on breakage, excessive yellowing and loss of light transmission.</p> <p>Fire Rating: Makrolon 2099 when tested to BS 476 Part 3 is rated AA surface spread of flame to BS 476 Part 7 Class 1. Class O material to Building Regulation 1985. TP(a) rigid classification as described in approved Document B of Building Regulation 1991.</p>				
<b>Fragility</b>	<p><b>They have been tested and are classed as NON-FRAGILE Class B to ACR(M)001:2005.</b></p> <p><b>Test for Fragility of Roofing Assemblies.</b></p>				
<b>'U' Value</b>	Double skin 2.7 W/m <sup>2</sup> K Triple skin 1.5 W/m <sup>2</sup> K				
<b>Profile</b>	Dome or Pyramid.				
<b>Colour</b>	Clear – light transmission 90% Opal – light transmission 60%.				
<b>Sizes</b>	To suit your roof opening ___mm x ___mm				
<b>Other Requirements</b>	Non Vented, Pole Operated Control Vent, Pole Operated Hinged Opening Vent, Electrical Opening Vent.				
<b>Fixing</b>	In accordance with ICB fixing recommendations.				

All Rooflights have been tested at BRE and are manufactured to: BS EN 6375-1:2009 Weather Tightness; BS EN 1026 / 12207:2000 Air Permeability; BS EN 1873 / 12208:2000 Water Tightness; BS EN 12210:2000 Wind Resistance; BS EN 1991-1 Snow Load; BS EN ISO 140 Acoustic; BS EN 1627-1630 Security.

ICB (Waterproofing) Ltd.  
Unit 9 -11, Fleets Industrial Estate, Willis Way, Poole, Dorset, BH15 3SU UK  
Tel: 01202 785200 Fax: 01202 785201 Email: [info@icb.uk.com](mailto:info@icb.uk.com)

[www.icb.uk.com](http://www.icb.uk.com)



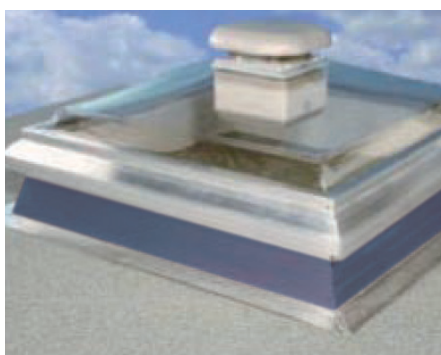
---

# EVALITE DOMES & PYRAMIDS

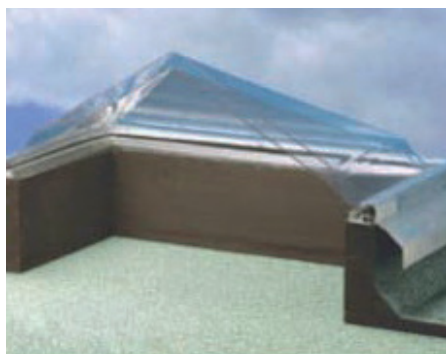
## IMAGES

---

The following images show typical Domes & Pyramids.



### Upstand examples



All Rooflights have been tested at BRE and are manufactured to: BS EN 6375-1:2009 Weather Tightness; BS EN 1026 / 12207:2000 Air Permeability; BS EN 1873 / 12208:2000 Water Tightness; BS EN 12210:2000 Wind Resistance; BS EN 1991-1 Snow Load; BS EN ISO 140 Acoustic; BS EN 1627-1630 Security.

ICB (Waterproofing) Ltd.  
Unit 9-11, Fleets Industrial Estate, Willis Way, Poole, Dorset, BH15 3SU UK  
Tel: 01202 785200 Fax: 01202 785201 Email: [info@icb.uk.com](mailto:info@icb.uk.com)

[www.icb.uk.com](http://www.icb.uk.com)

# EVALITE MONO PITCH

## TECHNICAL DATA

**The Mono Pitch rooflight is the most common style of rooflight. This is due to its versatility within the pitch (minimum 5° to normally 30-40°) and universal style that allows it to be used over most areas to provide significant daylight.**

It can also be supplied with specialised glass for both light and solar transmittance, along with electrical openers for smoke and natural ventilation.

	<b>Evalite Mono Pitch Rooflight</b>
<b>Type</b>	Monopitch rooflight up to 6 metre span. Pitch as required by Architect. Min 5°. To BS 5516 CP3 Chapter V and BS 6399 Part 3 1988.
<b>Frame</b>	Aluminium, aluminium to BS 1474:1987 Alloy 6063-T6. Bars normally at 600mm but can be changed to suit Architects' requirements.
<b>Upstand Finish</b>	Dark grey – XTEVA coated – Aluminium.
<b>Colour</b>	RAL 9010 white matt or any standard RAL colour.
<b>Kerb</b>	Structural kerb by Main Contractor. Normally 100mm/150mm wide x 150mm high. Kerb must be capable of supporting the weight of the structure. Glass structure weighs 50 Kilos M <sup>2</sup> surface area.
<b>Glazing</b>	<p><b>Option 1</b> Sealed double glazed units comprising: 6.0mm clear toughened outer pane/16mm air gap argon filled, 6.4mm Low 'E' laminate inner pane. 'U' value up to 1.6 W/M<sup>2</sup>K depending on glass specification. (Other glass can be fitted if required to suit your requirements).</p> <p><b>Option 2</b> 3mm UV coated polycarbonate inner skin, 3mm or 4mm UV coated polycarbonate outer. The glazing is Makrolon Mono Longlife UV resistant polycarbonate sheet. 10 Year warranty on breakage, excessive yellowing and loss of light transmission. Fire Rating: Makrolon 2099 when tested to BS 476 Part 3 is rated AA surface spread of flame to BS 476 Part 7 Class 1. Class O material to Building Regulation 1985. TP(a) rigid classification as described in approved Document B of Building Regulation 1991.</p> <p><b>Option 3</b> Multiwall Polycarbonate 0.83 W/m<sup>2</sup>k centre panel.</p>
<b>Fragility</b>	<b>They have been tested and are classed as NON FRAGILE Class B. To ACR(M)001:2005 Test for Fragility of Roofing Assemblies.</b>
<b>Ventilation</b>	Electrically operated opening panes as requested. Wiring by others.
<b>Flashings</b>	Lead by others.
<b>Sizes</b>	To suit your requirements.
<b>Fixing</b>	IAW ICB fixing recommendations.

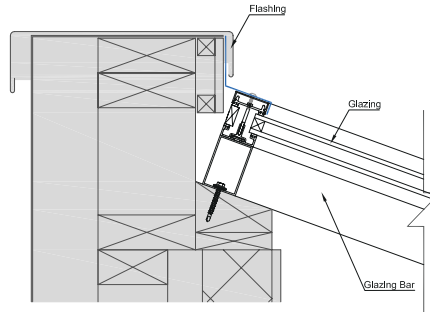
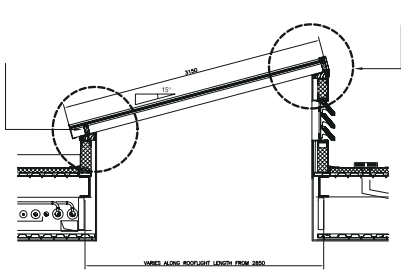
All Rooflights have been tested at BRE and are manufactured to: BS EN 6375-1:2009 Weather Tightness; BS EN 1026 / 12207:2000 Air Permeability; BS EN 1873 / 12208:2000 Water Tightness; BS EN 12210:2000 Wind Resistance; BS EN 1991-1 Snow Load; BS EN ISO 140 Acoustic; BS EN 1627-1630 Security.

ICB (Waterproofing) Ltd.  
Unit 9 -11, Fleets Industrial Estate, Willis Way, Poole, Dorset, BH15 3SU UK  
Tel: 01202 785200 Fax: 01202 785201 Email: [info@icb.uk.com](mailto:info@icb.uk.com)

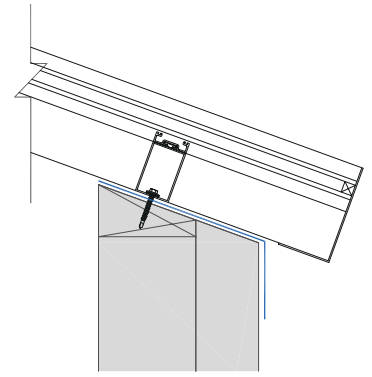
[www.icb.uk.com](http://www.icb.uk.com)

# EVALITE MONO PITCH FIXING DETAILS

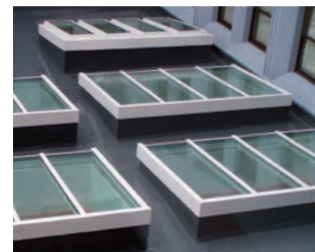
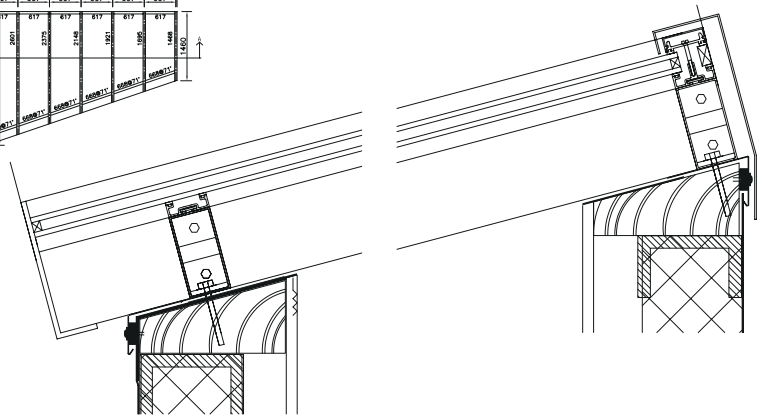
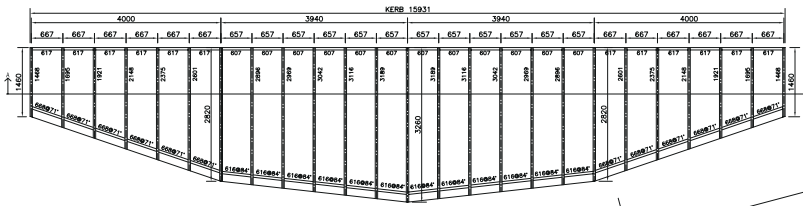
The following diagrams show Mono Pitch fixing details. Other details upon request.



Detail A.



Detail B.



All Rooflights have been tested at BRE and are manufactured to: BS EN 6375-1:2009 Weather Tightness; BS EN 1026 / 12207:2000 Air Permeability; BS EN 1873 / 12208:2000 Water Tightness; BS EN 12210:2000 Wind Resistance; BS EN 1991-1 Snow Load; BS EN ISO 140 Acoustic; BS EN 1627-1630 Security.

ICB (Waterproofing) Ltd.  
Unit 9 -11, Fleets Industrial Estate, Willis Way, Poole, Dorset, BH15 3SU UK  
Tel: 01202 785200 Fax: 01202 785201 Email: info@icb.uk.com

[www.icb.uk.com](http://www.icb.uk.com)

# EVALITE MONOVISION ROOFLIGHTS

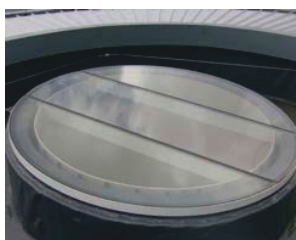
## TECHNICAL DATA

**The Monovision System is a silicone sealed unit removing the need for flashings and external cappings giving a flush look and feel.**

The rooflight provides a slim sleek look both internally and externally, maximising the viewing and daylight area. These are quite often installed to a structural upstand but they can be manufactured with an ICB upstand, which is more suitable on the Diameter Rooflight.

	<b>Evalite Monovision Rooflight</b>
<b>Type</b>	Monovision Rooflight Pitch as required by Architect. Min 12°. To BS 5516 CP3 Chapter V and BS 6399 Part 3 1988.
<b>Upstand Finish</b>	Dark grey – XTEVA coated – Aluminium.
<b>Colour</b>	Standard RAL colour.
<b>Kerb</b>	Structural kerb by Main Contractor. Normally 100mm/150mm wide x 150mm high. Kerb must be capable of supporting the weight of the structure. Glass structure weighs 50 Kilos M <sup>2</sup> surface area. Insulated upstand available upon request & design.
<b>Glazing</b>	Sealed double glazed units comprising – Standard 6.0mm clear toughened outer pane/16mm air gap argon filled, 6.4mm Low 'E' laminate inner pane to give centre pane 'U' value 1.1 W/m <sup>2</sup> K. Overall 'U' value 1.4 W/m <sup>2</sup> K. To British Standards BS EN 1279 Parts 2 & 3. Other glass can be fitted if required to suit your requirements. Make up is dependant on unit size and loadings.
<b>Fragility</b>	<b>They have been tested and are classed as NON FRAGILE Class B.</b> <b>To ACR(M)001:2005 Test for Fragility of Roofing Assemblies.</b> <b>CWCT TN66/67 available on request.</b>
<b>Tested/ Manufactured to</b>	All Rooflights are tested and manufactured to: BS EN 6375 Weather Tightness BS EN 1026 Air Permeability BS EN 1027 Water Tightness of Glass Rooflights BS EN 1873 Water Tightness of Polycarbonate Rooflights.
<b>Flashings</b>	All weathered flashings by others.
<b>Sizes</b>	To suit your requirements.
<b>Fixing</b>	In accordance with ICB fixing recommendations.

**Other details and options upon request.**



All Rooflights have been tested at BRE and are manufactured to: BS EN 6375-1:2009 Weather Tightness; BS EN 1026 / 12207:2000 Air Permeability; BS EN 1873 / 12208:2000 Water Tightness; BS EN 12210:2000 Wind Resistance; BS EN 1991-1 Snow Load; BS EN ISO 140 Acoustic; BS EN 1627-1630 Security.

ICB (Waterproofing) Ltd.  
Unit 9 -11, Fleets Industrial Estate, Willis Way, Poole, Dorset, BH15 3SU UK  
Tel: 01202 785200 Fax: 01202 785201 Email: [info@icb.uk.com](mailto:info@icb.uk.com)

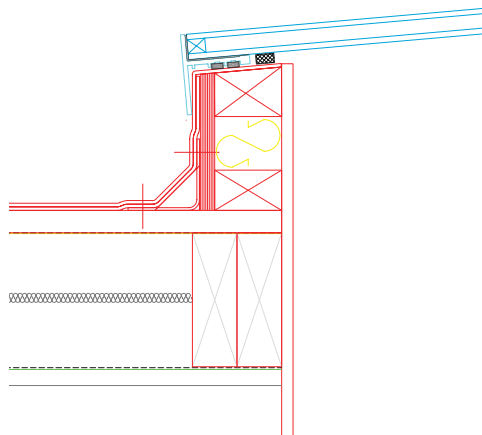
[www.icb.uk.com](http://www.icb.uk.com)



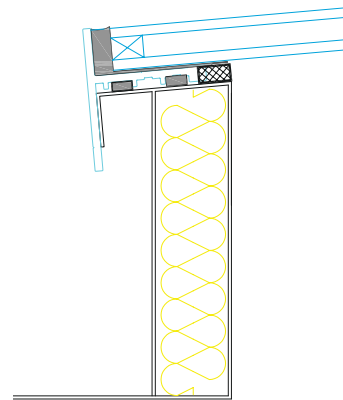
# EVALITE MONOVISION ROOFLIGHTS

## TECHNICAL DATA

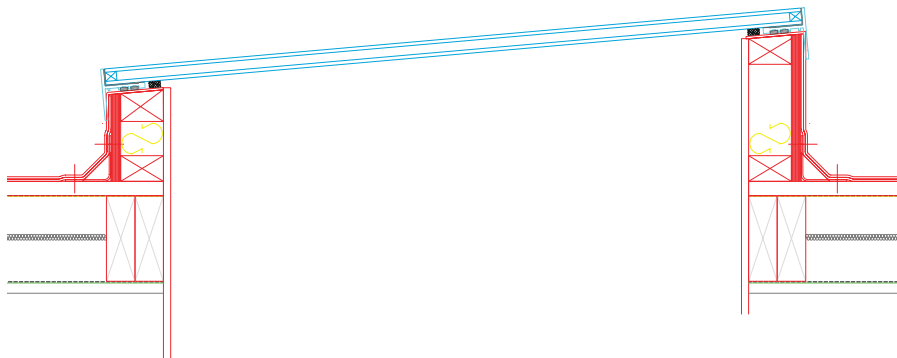
The following diagrams show typical Monovision Rooflight fixing details. Other details upon request.



**Structural Upstand**

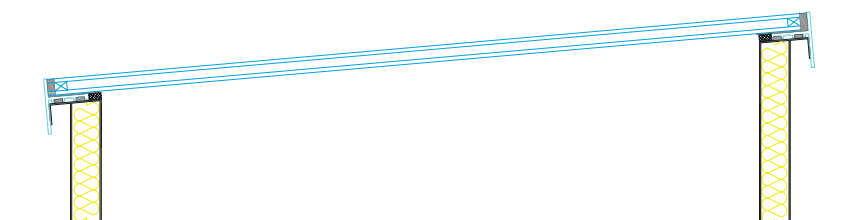


**ICB Upstand**



**Structural Upstand**

Recommended pitch minimum 5° depending on size to prevent ponding.



**ICB Upstand**

Recommended pitch minimum 5° depending on size to prevent ponding.

All Rooflights have been tested at BRE and are manufactured to: BS EN 6375-1:2009 Weather Tightness; BS EN 1026 / 12207:2000 Air Permeability; BS EN 1873 / 12208:2000 Water Tightness; BS EN 12210:2000 Wind Resistance; BS EN 1991-1 Snow Load; BS EN ISO 140 Acoustic; BS EN 1627-1630 Security.

ICB (Waterproofing) Ltd.  
Unit 9 -11, Fleets Industrial Estate, Willis Way, Poole, Dorset, BH15 3SU UK  
Tel: 01202 785200 Fax: 01202 785201 Email: [info@icb.uk.com](mailto:info@icb.uk.com)

[www.icb.uk.com](http://www.icb.uk.com)



# EVALITE SMOKE VENTILATION

## TECHNICAL DATA

**Ventilation of escape stairs is important. This will assist the fire service during fire fighting operation and for smoke clearance after the fire has been extinguished.**

The efficiency of the ventilation is determined by the prevailing wind. It is for this reason that the fire services has full control of the opening and closing of the ventilators on arrival at a building.

<b>Evalite Smoke Release Hatch</b> <b>Tested to BS 7346:Part 1:1990 at Warrington Fire Global Safety</b>	
<b>Type</b>	Hatches suitable for all types of flat/pitched roofs.
<b>Frame</b>	Aluminium, aluminium to BS 1474:1987 Alloy 6063-T6.
<b>Upstand Finish</b>	Dark grey – XTEVA coated – Aluminium.
<b>Colour</b>	Polyester powder coated to BS 6496 Interpon D36 range. RAL 9010 white matt or any standard RAL colour.
<b>Kerb</b>	<b>FR1</b> ICB proprietary aluminium upstand 400mm high. This kerb is painted white internally. The upstand is insulated externally with aluminium. Depth of upstand can be changed to suit your particular requirements. <b>BU1</b> ICB proprietary aluminium upstand 150mm high. This kerb is painted white internally. The upstand is insulated externally with insulation encapsulated in aluminium. The flange width can be modified to meet your needs.
<b>Lid</b>	<b>Type A</b> Insulated aluminium lid. <b>Type B</b> Double glazed glass lid comprising 6.0mm clear toughened outer, 16mm air gap argon filled, 6.4mm low 'E' laminate inner. <b>Type C</b> Polycarbonate (not Scotland due to Building Regulations).
<b>Fragility</b>	They have been tested and are classed as NON-FRAGILE Class B to ACR(M)001:2005 Test for Fragility of Roofing Assemblies.
<b>Fire Rating</b>	<b>ICB Solus Smoke hatches comply to all current regulations and are TESTED TO BS EN 12101-2:2003 AT EXOVA WARRINGTON FIRE GLOBAL SAFETY along with complying to NON FRAGILE Class B to ACR(M)001:2005 Test for Fragility of Roofing Assemblies.</b>
<b>Roof Opening</b>	1050 X 1050 ( 1m <sup>2</sup> ) or other dimensions to meet your requirements.
<b>Operation</b>	24 Volt high temperature linear actuators.
<b>Other Requirement</b>	Control panel with 240V/24V transformer, 1Amp/Hr battery backup in event of mains failure. Battery trickle charged to ensure 100% charge. Single zone with 1 fireman's switch. Additional switch at top landing if required.
<b>Fixing</b>	In accordance with ICB fixing recommendations.

All Rooflights have been tested at BRE and are manufactured to: BS EN 6375-1:2009 Weather Tightness; BS EN 1026 / 12207:2000 Air Permeability; BS EN 1873 / 12208:2000 Water Tightness; BS EN 12210:2000 Wind Resistance; BS EN 1991-1 Snow Load; BS EN ISO 140 Acoustic; BS EN 1627-1630 Security.

ICB (Waterproofing) Ltd.  
Unit 9 -11, Fleets Industrial Estate, Willis Way, Poole, Dorset, BH15 3SU UK  
Tel: 01202 785200 Fax: 01202 785201 Email: info@icb.uk.com

[www.icb.uk.com](http://www.icb.uk.com)

# EVALITE SMOKE VENTILATION

## TECHNICAL DATA

An escape stair within a protected zone should have either;

- a) A ventilator of not less than 1m<sup>2</sup> at the top of the stair
- b) An opening window at each storey (openable area 0.5m<sup>2</sup>)

In cases where the building consists of more than one upper floor then two firemen switches must be used (NBS Spec Smoke Hatch) and (Drawing details) one on the ground floor and one on the top floor level of the building.

Our Smoke hatches not only provide a control for smoke egress they can act as an Access hatch due to the options built into the control panels. They can also act as a rooflight over a stairwell with glass lids replacing the Aluminium standard lid (To comply with Non-Fragile, the glass must increased to 8mm toughened if required).

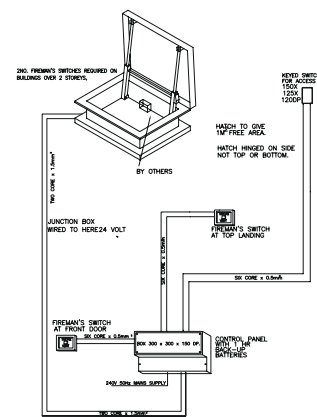
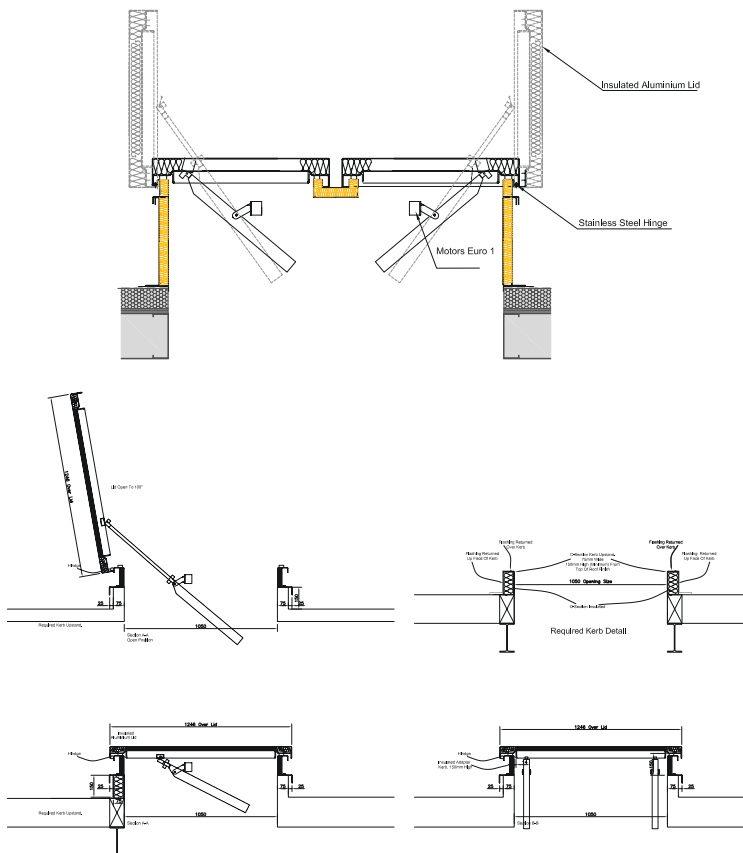
Thermostatic materials in ceilings, rooflights can provide a fire hazard due to burning droplets and normally dense toxic smoke. When tested to BS 2782 method 120A, thermostatic materials with a softening point of below 200°C, because of this thermostatic materials (polycarbonate) should not be used in Protected Zones i.e Smoke Hatches above stairwells.

# EVALITE SMOKE VENTILATION

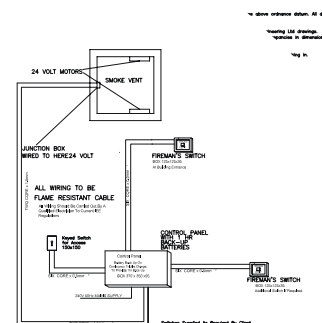
## FIXING DETAILS

The following diagrams show typical Smoke Ventilation fixing details. Other details upon request.

Internal sizes along with kerbs and upstands can be made to suit individual requirements.



Electrical Wiring



All Rooflights have been tested at BRE and are manufactured to: BS EN 6375-1:2009 Weather Tightness; BS EN 1026 / 12207:2000 Air Permeability; BS EN 1873 / 12208:2000 Water Tightness; BS EN 12210:2000 Wind Resistance; BS EN 1991-1 Snow Load; BS EN ISO 140 Acoustic; BS EN 1627-1630 Security.

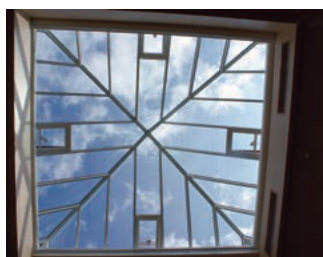
# EVALITE SPECIAL GLAZING

## TECHNICAL DATA

**Self supporting rooflights are generally used on the ridge of a roof slightly above the finished roof level with a pitch of 30-45°.**

They can be supplied with motorised ventilation and specialised glass if required.

	<b>Evalite Rooflights</b>
<b>Type</b>	Evalite Rooflights for special glazing requirements can be pitched as required by Architect. To BS 5516 CP3 Chapter V and BS 6399 Part 3 1988.
<b>Frame</b>	Aluminium, aluminium to BS 1474:1987 Alloy 6063-T6. Bars normally at 600mm but can be changed to suit Architects' requirements.
<b>Upstand Finish</b>	Dark grey – XTEVA coated – Aluminium.
<b>Colour</b>	RAL 9010 white matt or any standard RAL colour.
<b>Kerb</b>	Structural kerb by Main Contractor. Normally 100mm/150mm wide x 150mm high. Kerb must be capable of supporting the weight of the structure. Glass structure weighs 50 kilos M <sup>2</sup> surface area.
<b>Glazing</b>	Sealed double glazed units comprising 6.0mm clear toughened outer pane/16mm air gap argon filled, 6.4mm Low 'E' laminate inner. Other glass can be fitted if required to suit your requirements.
<b>Fragility</b>	<b>They have been tested and are classed as NON-FRAGILE Class B. To ACR(M)001:2005 Test for Fragility of Roofing Assemblies.</b>
<b>Flashings</b>	Lead by others.
<b>Profile</b>	Height in centre dependant on size of dome required.
<b>Sizes</b>	To suit your overall kerb size.
<b>Fixing</b>	IAW ICB fixing recommendations.



All Rooflights have been tested at BRE and are manufactured to: BS EN 6375-1:2009 Weather Tightness; BS EN 1026 / 12207:2000 Air Permeability; BS EN 1873 / 12208:2000 Water Tightness; BS EN 12210:2000 Wind Resistance; BS EN 1991-1 Snow Load; BS EN ISO 140 Acoustic; BS EN 1627-1630 Security.

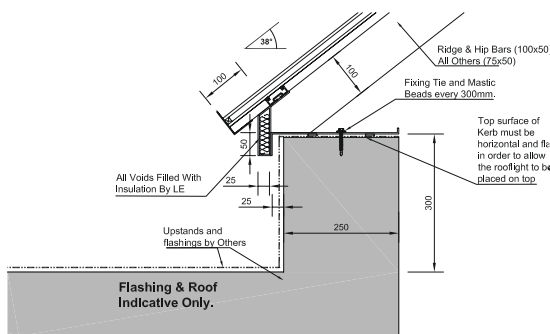
ICB (Waterproofing) Ltd.  
Unit 9 -11, Fleets Industrial Estate, Willis Way, Poole, Dorset, BH15 3SU UK  
Tel: 01202 785200 Fax: 01202 785201 Email: [info@icb.uk.com](mailto:info@icb.uk.com)

[www.icb.uk.com](http://www.icb.uk.com)

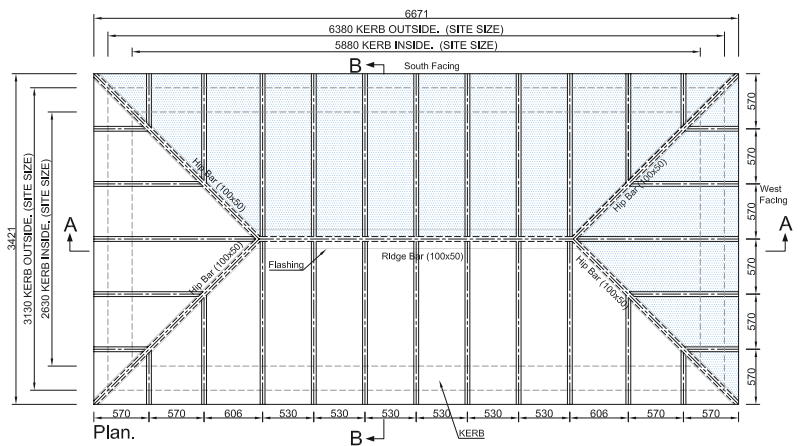
# EVALITE SPECIAL GLAZING TECHNICAL DATA

The following diagrams show typical Special Glazing fixing details. Other details upon request.

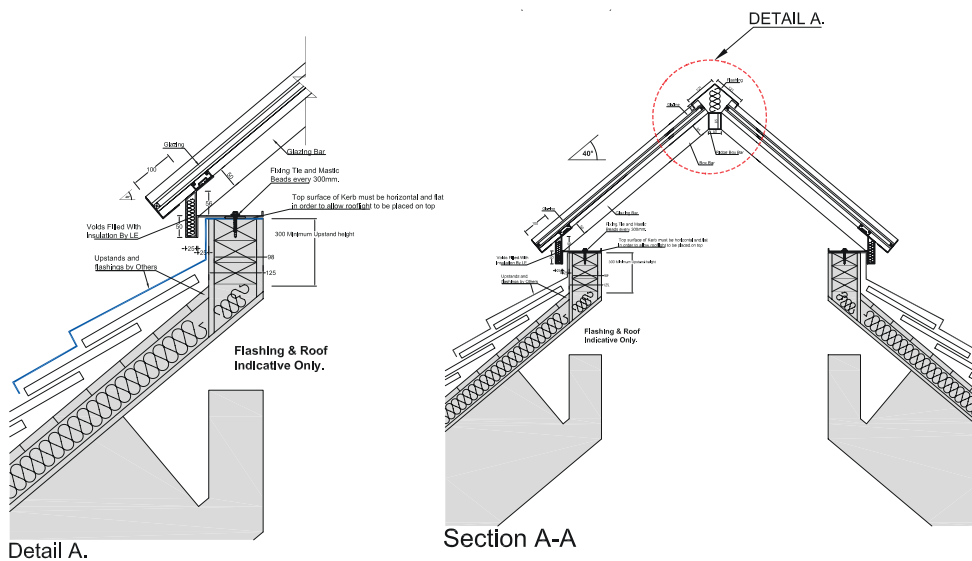
Diagram shows different glass can be used on the same rooflight for solar and light transmittance control.



Detail A.

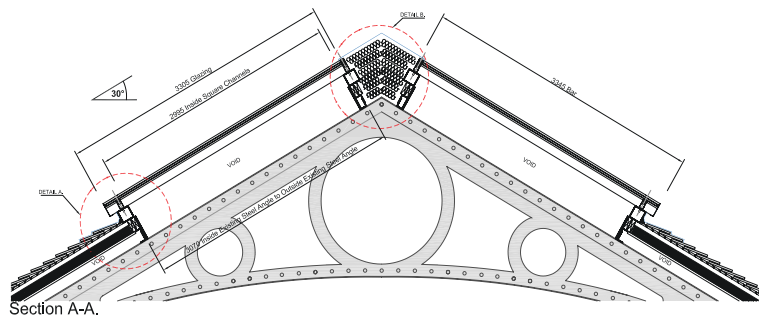


Plan.



Detail A.

Section A-A



Section A-A.

All Rooflights have been tested at BRE and are manufactured to: BS EN 6375-1:2009 Weather Tightness; BS EN 1026 / 12207:2000 Air Permeability; BS EN 1873 / 12208:2000 Water Tightness; BS EN 12210:2000 Wind Resistance; BS EN 1991-1 Snow Load; BS EN ISO 140 Acoustic; BS EN 1627-1630 Security.

ICB (Waterproofing) Ltd.  
Unit 9-11, Fleets Industrial Estate, Willis Way, Poole, Dorset, BH15 3SU UK  
Tel: 01202 785200 Fax: 01202 785201 Email: info@icb.uk.com

[www.icb.uk.com](http://www.icb.uk.com)

[www.icb.uk.com](http://www.icb.uk.com)

**ICB (Waterproofing) Ltd.** Unit 9 -11, Fleets  
Industrial Estate,  
Willis Way, Poole, Dorset, BH15 3SU UK  
Tel: 01202 785200 Fax: 01202 785201  
Email: [info@icb.uk.com](mailto:info@icb.uk.com)

 @icb\_uk

